



PONDEROSA

Back Country Horsemen of
Washington

"Educate, Advocate, and Move Dirt!"

Website: PBCHW.COM



May/June 2025

Celebration and ribbon cutting for the
new trail and land acquisition at Palisades
Park.



PBCH CALENDAR

***All events subject to
change; Watch facebook
and emails.***

May 22, ceremony Rimrock-
to-Riverside Project

June 3, Member Meeting,
Potluck, at Patty Wright's
house

June 7 & 8, Free days at
Riverside State Park

June 7 Mounted Patrol
Partnership at RSP

June 22, PBCH Poker Ride
Fundraiser.

July 1, Member Meeting

August 5, Member Meeting

A Word from the Pres

June Meeting: Please come and help celebrate the beginning of summer at our next meeting, a potluck on Tuesday, June 3 at Patty Wright's house. Patty will provide BBQ german sausage, buns and sauerkraut; the rest is up to YOU! Time: 5:30 p.m. Please reach out if you need the address.

Spring Chapter Rides: Ponderosa has had two chapter rides and a work party so far this year.

The first was hosted by Patti and Ken, and was held on Easter weekend. We rode out from their place on 7-Mile road, and, while we didn't see any bunnies, we did see lots of wildflowers and some beautiful scenery. Shortly after leaving the rendezvous, we crossed 7-Mile Road at the trailhead, headed across Deep Creek, past the ORV park and down the escarpment into the lower part of RSP. The ride was about 2.5 hours in total; perfect for a lovely sunny spring day!

The second ride was held at Antoine Peak, starting at the Brevier Road trailhead. This area has spectacular views from just about everywhere! We headed up to the Emerald Necklace trail, which circumnavigates the peak at about 3000' elevation. The trail was popular with hikers, mountain bikers and dog walkers, but everyone was respectful and friendly. We got the best part of the day with sunshine and very little wind, but the clouds were starting to build by the time we returned to the trailhead. This ride was a little short of 2 hours long. We recommend it!

Finally, the general meeting for May was held at RSP equestrian area. We did quite a bit of trimming at horse/rider heights, and took out one tree that had fallen across a trail with no easy way to get around it. Way to go, Ponderosa! Keeping those trails open!



Patty on Toffee, Antoine Peak

Ken and Patti, RSP on Easter



Ken and Michelle removing a downed tree



Between the ears, Antoine Peak

Poker Ride Fundraiser: June 22

By Linda White

We are nearing the date of the Poker Ride at Riverside State Park. We are still in need of 2-4 volunteers to work game stations. If you or a family are willing, please let me know.

Raffle items are rolling in and we should have a great display.

Thanks again to all for your help in making this a success.



**PONDEROSA BACK COUNTRY
HORSEMEN**

POKER RIDE

June 22, 2025

**Riverside State Park Equestrian Area
1st Riders out 9 am – Last Rider out 11
am**

Game Ends 1:30 pm

RAFFLES ! PRIZES !

**Prizes for Best Hand, 2nd Best Hand & LoBall
Hand**



**Pre-Registration \$30
On-Site Registration \$45
Extra Hands \$5
Under 18 Ride Free**

Online Registration
http:

Closes 6/12/25

For More Information
Linda White, 509-413-
7392, linda43562@hotmail.com

Or

Patty Wright, 509-868-
6269, pa2t2002@gmail.com

[Discover Pass required](#)

2025 PONDEROSA BCH Planning Calendar (as of 5/26/25)

All dates subject to change; watch emails and Facebook.

Work Parties and Member Rides will be planned and scheduled as the year proceeds.

May May 6, Member Meeting May 21, Newsletter articles due for May/Jun Newsletter May 22 ceremony to commemorate the Rimrock-to-Riverside Project	June June 3, Member Meeting, Potluck, at Patty Wright's house June 7 & 8, Free days at Riverside State Park June 7 Mounted Patrol Partnership at RSP June 22: PBCH Poker Ride Fundraiser.
July July 1, Member Meeting July 23, Newsletter articles due for Jul/Aug newsletter	August August 5, Member Meeting
September September 2, Member Meeting September 24, Newsletter articles due for Sept/Oct Newsletter	October October 4 & 5, Riverside State Park Free days. October 7, Member Meeting
November November 4, Member Meeting November 21, Newsletter articles due for Nov Dec newsletter	December 2025 December 2, Member Meeting

Other events can be found here: https://www.bchw.org/upcoming_events.php

PALISADES PARK CELEBRATION EVENT

On May 22, a group met at Palisades park to celebrate the 130 acre "Rimrock to Riverside" addition and "cut the ribbon" on its newly-constructed North Loop trail. The ceremony featured the highlights of the story of Palisades Park expansion and recognized the many individuals and organizations that played key roles. The Ponderosa Chapter of Back Country Horsemen of Washington advocated strongly for the addition of this land and then followed through with both design input and then good ol' pick-n-shovel work to carve the new trail.



Other participants included Friends of Palisades, Inland Northwest Land Conservancy, Washington Trails Association, Evergreen Mountain Bike Alliance, Spokane Mountaineers, the Spokane Tribe, City of Spokane Parks & Recreation, Spokane County Conservation Futures Program and Washington Trust Bank, and others.





Here's a fun fact that I (Michelle) learned from Karen Volosing— Palisades is a city park, but it is not within the City Limits of Spokane, it's in the County.

Below is a link to a Spokesman Review article describing the new area, trail, and history of the Palisades Park project. The “charismatic cowboy” Craig Volosing, and his wife Karen, are members of Ponderosa Back Country Horsemen. Thanks for all your hard work Craig and Karen, and all the other members and partners who contributed over the years. And congratulations to all the trail users who will use the new area and trail.

<https://www.spokesman.com/stories/2025/may/22/opening-of-new-palisades-park-trail-marks-mileston/>

Riverside State Park Forest Health Project

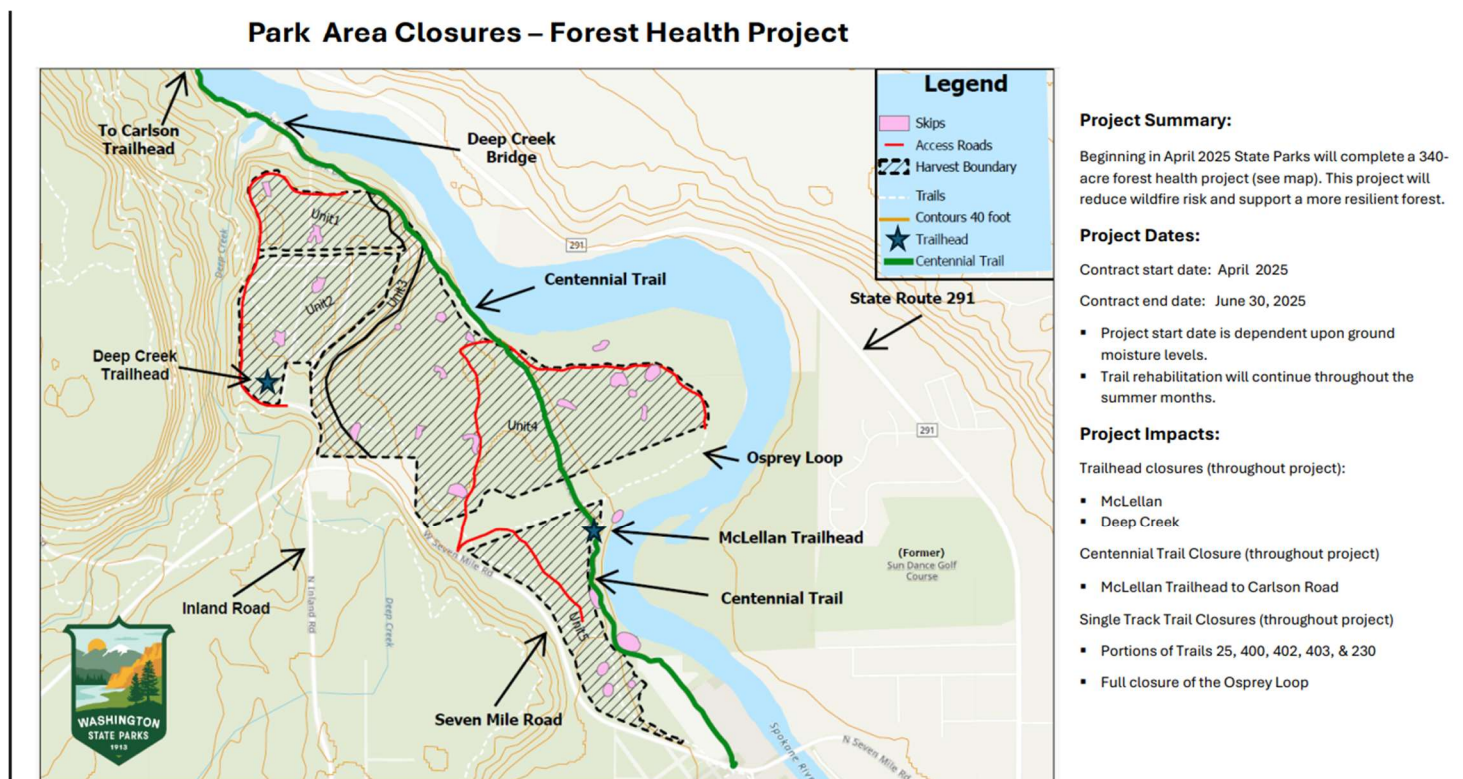
By Ken Carmichael

Some of you may know that Riverside State Park is cutting down trees in the area mostly bounded by Deep Creek Trailhead, the river, Seven Mile Bridge and Seven Mile Rd.

Lots of trees are coming down and it will be much like an open meadow with scattered trees. We do not know the condition of the trails. Since the work is still in process it is hard to tell what it will finally look like. The contractors are supposed to do some cleanup.

The projected completion date is in June. The area is off limits until then, including that section of the Centennial Trail.

(More details here: <https://parks.wa.gov/about/strategic-planning-projects-public-input/projects/riverside-forest-health-treatment>.)



Escure Ranch Ride

By Ken Carmichael

A couple weeks ago Patti and I spent 4 days at the Escure Ranch. The formal name is the Rock Creek Recreation Area and is Bureau of Land Management land. It is south of Lamont Washington, we take exit 245 off of Interstate 90. It was a special trip as my granddaughter Madison joined us for the first time.

It is about 13,000 acres. BCH was a major factor in developing a wonderful equestrian campground. It includes a restroom, highline for 7 horses, 10 corrals, stock water, 3 picnic tables, 2 fire pits, manure dump and lots of open, flat area for parking. You need to bring your own shade. The downside is a very poor, one lane driveway the last 2 miles into the ranch. Going slow is the key.

The riding is great with many options out of the trailhead. We figure that there are about 8 different routes to pick from along Rock Creek, down in the draws and up high with great views. There are a few gates to go through. Depending on the time of year there are also cattle grazing and snakes. We also plan to be there out of the hunting season.



Photos: the creek at Escure, Ken's granddaughter, and a gorgeous sunset.

Note From the Editor: The theme for this newsletter is “Maintenance”.

Saddle and Blanket Maintenance

By Ken Carmichael

One of my winter projects each year is to clean and oil all the saddles and bridles. This turns into a major project but is well worth the effort. A leather saddle can last forever if properly maintained.

I completely tear each saddle apart and wash and oil it. As I take the equipment apart I record what hole each buckle is in so that the saddle and bridle go back the same way it was originally. This makes it much easier the first time I use them in the spring. They then hang in the basement with a stick through the stirrups to get them twisted back to the way I like them. This also provides a good opportunity to check for damage or weak points. I like to get them repaired during the winter and not when I am ready to ride in the spring.

Our horses are not typically blanketed in the winter so put on a good coat of long hair. This means lots of shedding in the spring. When this is done, we need to do a thorough cleaning of the saddle blankets. Then it is important to do this frequently during the year to remove dirt buildup. I hang them over the chain link fence to wash and dry. A real handy tool for fluffing up Silver's blanket was a dog shedding tool.

Note from the editor: I saw this May 20, 2025, Facebook and website post from Robert Eversole, and he gave me permission to use the information in our newsletter. I thought it fit right in with our maintenance topic. And it's a super-good reminder for me, because I forget to check things, and this is becoming our year for mechanical issues showing up on all our rigs.

Do Tires Go Bad?

By Robert Eversole (Trailmeister.com)

Spoiler alert: Yep. They sure can.

I just put a fresh set of tires on the Taj Mah Small, my little LQ horse trailer. That might not sound like breaking news, until I tell you those tires only had about 10,500 miles on them. The tread still measured a healthy 7/32 of an inch. So why the swap?

The answer lies in what you can't always see.

The sidewalls showed some signs of cracking, and the DOT date codes told the rest of the story: they were old. And old rubber doesn't age like fine wine; it dries out, loses flexibility, and eventually becomes a liability. It's a bit like using a rubber band that's been sitting in a junk drawer for a decade. It looks fine until it snaps when you need it most.



Cracked sidewalls might seem cosmetic, but those cracks can run through the structure. If the steel belts separate or the tread peels off at speed, you're in for a rough ride, or worse. Even short of catastrophe, aging tires can leak, hydroplane, or increase your stopping distance when you really need to hit the brakes.

And this isn't just about sun-baked trailer tires. Even tires stored indoors eventually break down. Most manufacturers agree that tires have a shelf life, no matter how good they look. Ford and Nissan say six years, tops. Michelin and Continental stretch it to ten, if you're inspecting them yearly after the fifth birthday.

Trailer Tires Age Out – Period

Most folks will wear out their vehicle tires before the rubber ages out. But not when it comes to trailers. Let's be real: trailer tires do a lot more sitting than rolling. For most of us, the tread will still be perfectly serviceable when the sidewalls start to crack. Trailer tires almost always age out before they wear out. And that's where folks get surprised, because it's not about miles. It's about time.

Reading the Fine Print (Literally)

If you know where to look, every tire has a "born-on" date. Find the oval with four numbers stamped into the sidewall. A code like 1203 means the 12th week of 2003, around March.



Just know that the code may be on the inward-facing side of the tire. That means you might have to crawl around with a flashlight or even pull a tire to check it. It's worth the hassle.

And no, your four tires might not all match exactly. That's normal and shipping and supply quirks. But they should be close in age. A few weeks or months apart is fine. Years? That's something to question.

Check Before You Roll

Even if the tires you're buying are "new," double-check those date codes before you leave the shop. Sometimes, what's labeled new has been sitting on a shelf for years. That doesn't make it dangerous, but it does mean a shorter lifespan for you, and maybe a better price, if you ask.

And the Spare? Yep, That Too

It's easy to forget the spare tire. Most of us only think about it when we're stuck on the side of the road. But spare tires age just like the rest, even if they've never touched pavement. Give yours a look. If it's looking rough or aging out, replace it before you need it.



Tires also age faster when exposed to sunlight, extreme heat, salty air, or repeated curb contact. Underinflated tires also break down more quickly. Keep them properly aired and out of the sun when you can.

Bottom Line

Tread depth isn't the whole story. Check the sidewalls. Read the DOT date code. Sometimes, the real danger is what you can't see until it's too late.

From the Editor:

I invite you all to continue to send me your horse- or wildlife-related stories, tips, jokes, articles, photos, words of wisdom, or whatever. I especially would like to encourage our officers and committee chairs to share their thoughts, visions and projects. The goal here is to make the newsletter fun, entertaining and informative.

Please send me photos of you and your equine buddy so I can highlight you in our newsletter. Introduce yourself to other members with background on you or your horse.

Michelle Eames, Newsletter Editor



Photo by Cindy Miller

BCH Officers 2025

PRESIDENT: Patty Wright

SECRETARY: Melissa Halpin

TREASURER: Linda White

STATE DIRECTOR: Ken Carmichael

ALTERNATE DIRECTOR: Patty Wright

The 2025 Executive Board for PBCH includes the officers, plus Michelle Eames, Newsletter Editor; and Patty Carmichael, Member At Large.